

• Chubbies

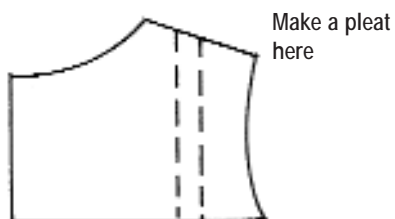
Pattern selection

Select the pattern size that matches the *chest* and *back waist* length the closest.

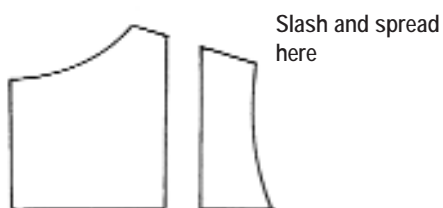
After selecting your pattern size, some additional areas may need to be measured and checked:

• Across the shoulder seam

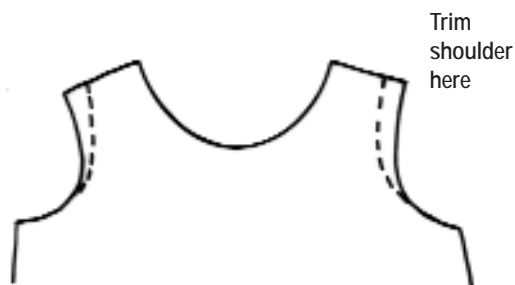
To **reduce** the shoulder and bodice, make a pleat in both the front and back bodice or yoke, as necessary to remove the excess fabric.



To **enlarge** the shoulder or bodice to correspond to the measurement, you may slash and spread the pattern.

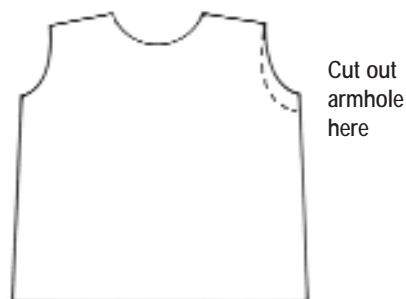


If a chubby does not quite fill out the shoulders but the chest fits nicely, make an adjustment in the shoulders, as shown below. This will keep the garment from hanging off the shoulders.



• Chubbie sleeve

It is probably better to select a pattern with a puff sleeve. This will allow a little more ease of movement across the back of the dress. It may also be a good idea to deepen the armhole 1/2" — 1". It is better to make these adjustments rather than sew a dress that is uncomfortable on the child.



If a dress size fits through the shoulders and neck, but is too tight under the arm, make the following adjustments:

Extend the bodice front and back 3/4" — 1" at the side seams. Do the same on the sleeve.



Note: I have extended the side seams of the bodice and sleeve up to 3" and tapered them to fit the child. This would work better with a puff sleeve, and **only** if the neckline and shoulders fit the child.

Fit the dress on the child. After you have sewn the shoulders together, put the dress on the child and pin it together down the side seams, making an exact, comfortable fit possible. This will determine your seam line.



